

Emerald Uniting Church
Invites you to take

A Walk Through Bethlehem

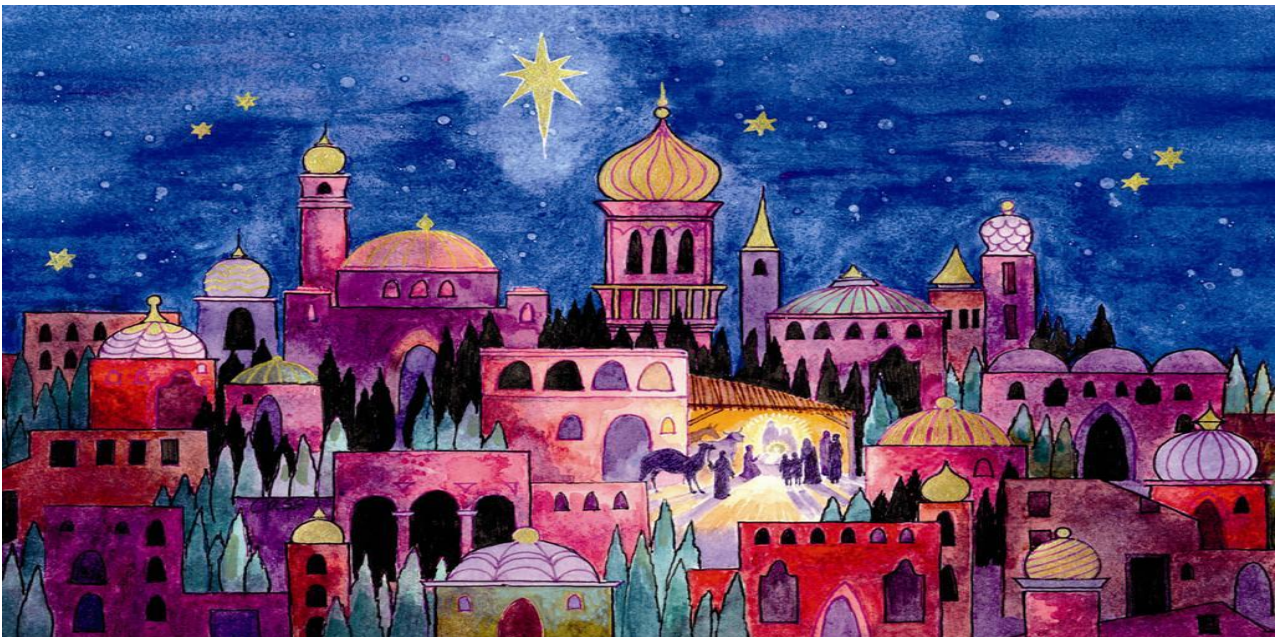
Experience the sounds, sights, smells and the
real star of first century Bethlehem

*Walk through the
market and delight
in the smells from
the bakery, the
wood turner and
the leather crafter*

Enjoy the
hospitality and
refreshments
at the inn

*Pet the
animals as
they watch
over the new
born baby*

*Get creative with
the activities
offered by the
weaver, the potter
and the candle
maker*



Open from 6pm until 8pm
on Friday, 9th December and Friday, 16th December
at Emerald Uniting Church, cnr Yamala and Borilla Streets

There is no cost for entry.

Tea, coffee, cordial and biscuits are provided.

A sausage sizzle and drinks are available at a small cost.