

PREPARED  
BE ON TIME

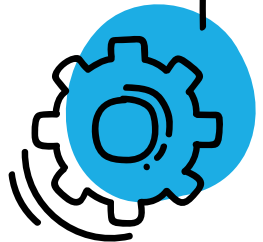
# LESSON OBJECTIVES

LEARNING INTENT: STUDENTS WILL IDENTIFY THE IMPORTANCE OF BEING PREPARED AND ON TIME TO SCHOOL.

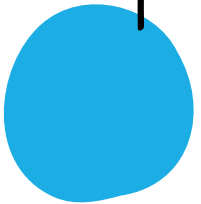
## SUCCESS CRITERIA

- REVIEW THE BELL CHANGES
- IDENTIFY THE IMPORTANCE OF BEING ON TIME
- IDENTIFY THE IMPLICATIONS OF BEING 'LATE'

SPECIALISED VOCABULARY: TIME | PREPARED



VIDEO



# WHY IS BEING 'ON TIME' IMPORTANT?

## SCHOOL

- SAFETY
- YOU WILL MISS IMPORTANT INFORMATION
- FRIENDS WILL NOT RELY ON YOU

## FUTURE

- LOSE YOUR JOB
- UNPROFESSIONAL AFFECTS OTHER PEOPLE

WHY IS BEING 'ON TIME' IMPORTANT? –  
WHAT ELSE CAN YOU THINK OF?

SCHOOL

- SAFETY
- YOU WILL MISS  
IMPORTANT INFORMATION
- FRIENDS WILL NOT  
RELY ON YOU

FUTURE

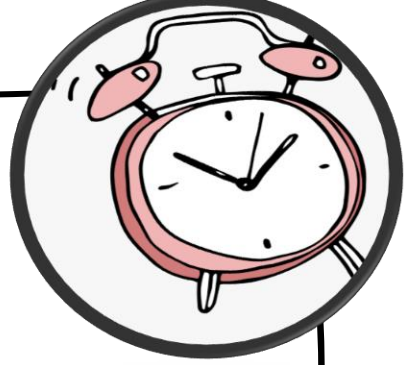
- LOSE YOUR JOB
- UNPROFESSIONAL  
AFFECTS OTHER PEOPLE

# BELL CHANGES

WARNING BELL	8:45am
<b>PC MEETING</b>	8:50am – 9:00am
<b>CHANGE OVER</b>	9:00 – 9:05
<b>LESSON 1</b>	9:05am – 10:15am
MORNING TEA	10:15am – 10:45 am (30 mins)
<b>LESSON 2</b>	10:45am – 11:55am
<b>CHANGE OVER</b>	11:55am – 12:00
<b>PERIOD 3</b>	12:00pm – 1:10pm
LUNCH	1:10pm – 1:40pm (30 mins)
<b>PERIOD 4</b>	1:40pm – 2:50pm



# EXPECTATIONS:



\* IT IS AN EXPECTATION THAT YOU ARE ON TIME TO CLASS AND LINED UP IN TWO LINES WITH YOUR PEERS BEFORE THE TIME THE SECOND BELL GOES.

UPON ENROLMENT YOU SIGNED AN AGREEMENT THAT YOU WOULD BE ON TIME.

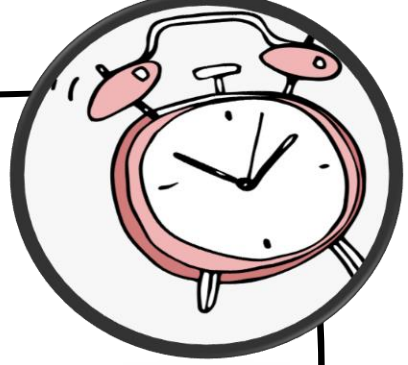


MORE TIME TO ASK QUESTIONS AND  
LEARN

- CONTACTS MADE TO  
PARENTS/GUARDIANS ARE POSITIVE
- ALL STUDENTS WHO ARE ON TIME WILL  
RECEIVE VIVOS FOR BEING ON TIME

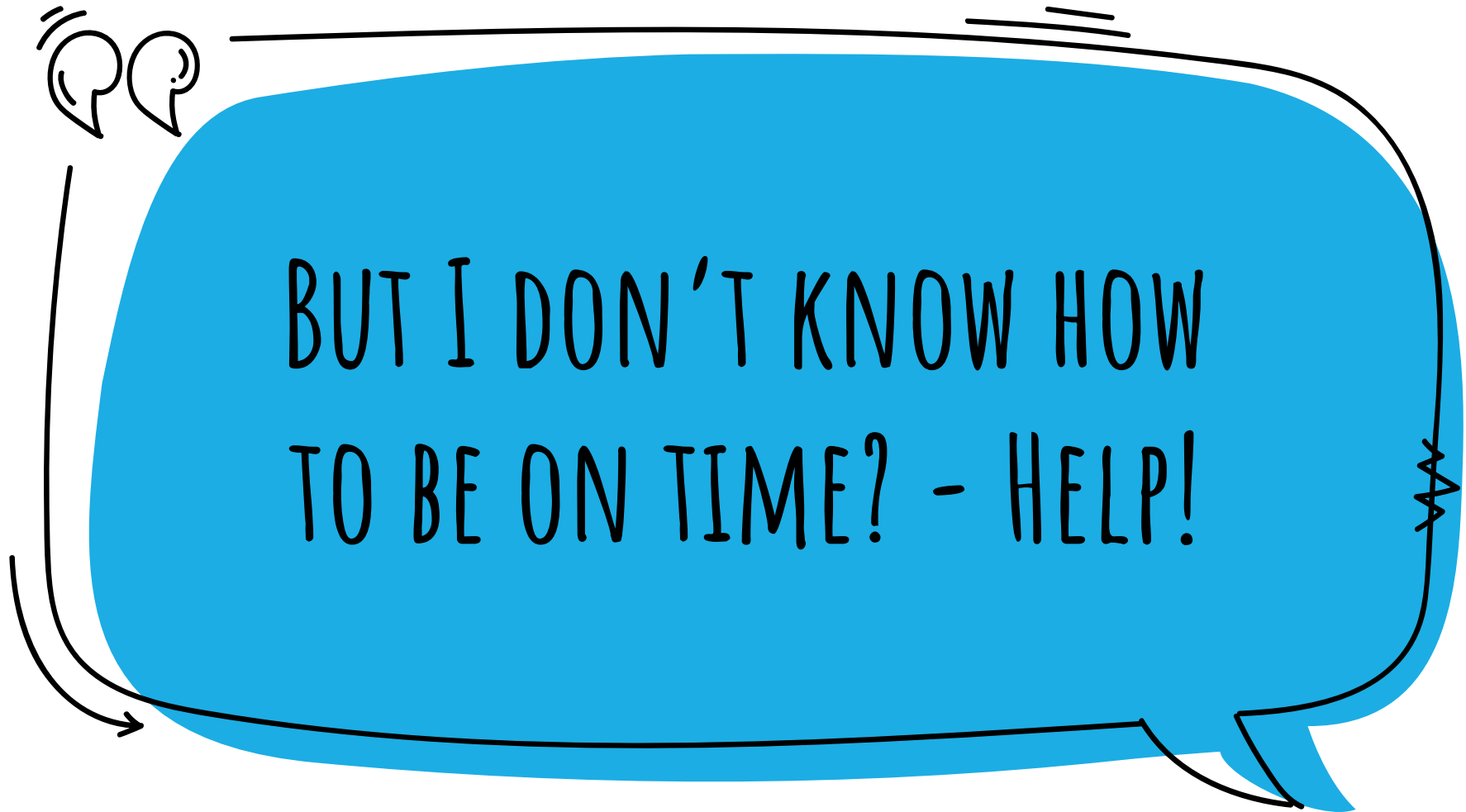
POSITIVES





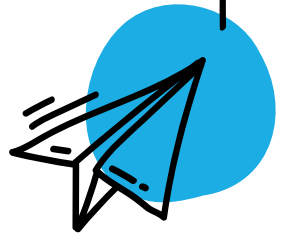
# CONSEQUENCES

\* IF YOU ARE LATE TO CLASS, YOUR TEACHER WILL ASK YOU TO MAKE UP THE TIME DURING EITHER FIRST OR SECOND BREAK.



## HOW TO 'BE ON TIME'

- ✗ LAY OUT YOUR SCHOOL CLOTHES THE NIGHT BEFORE
- ✗ KEEP YOUR SHOES IN ONE PLACE
- ✗ GO TO BED AT A REASONABLE HOUR
- ✗ PREPARE THE NIGHT BEFORE (BAG PACKED WITH SCHOOL BOOKS)
- ✗ USE YOUR DIARY
- ✗ INVEST IN AN ALARM CLOCK
- ✗ KEEP BREAKFAST SIMPLE - BUT HAVE IT!



# SCENARIO 1

PLEASE HELP!

I AM ARRIVING TO SCHOOL LATE  
EVERYDAY!

WHAT IS (1) THING YOU COULD DO TO  
PREVENT THIS FROM HAPPENING IN  
THE FUTURE?



# SCENARIO 2

THE SECOND BELL HAS JUST GONE  
AND YOUR FRIEND HAS JUST ASKED  
YOU TO COME TO THE BATHROOM  
WITH YOU.

WHAT ARE THE CONSEQUENCES?

WHO IS AFFECTED?



## REVIEW

- BEING ON TIME AT SCHOOL HELPS TO PREPARE YOU FOR LIFE
- BEING LATE CAN IMPACT YOUR LEARNING AND THE LEARNING OF YOUR PEERS
- BEING LATE TO YOUR PLACE OF WORK CAN RESULT IN LOSS OF WAGES OR LOSS OF EMPLOYMENT
- BEING LATE TO A SPORTING EVENT CAN RESULT IN LETTING DOWN YOUR TEAM AND LOSING THE GAME

