
Emerald

STATE HIGH SCHOOL

We are

**POLITE,
PREPARED**

And we

PARTICIPATE



8:46.40



PBL Focus

**Wear Your
Uniform
With Pride.**



PBL Focus



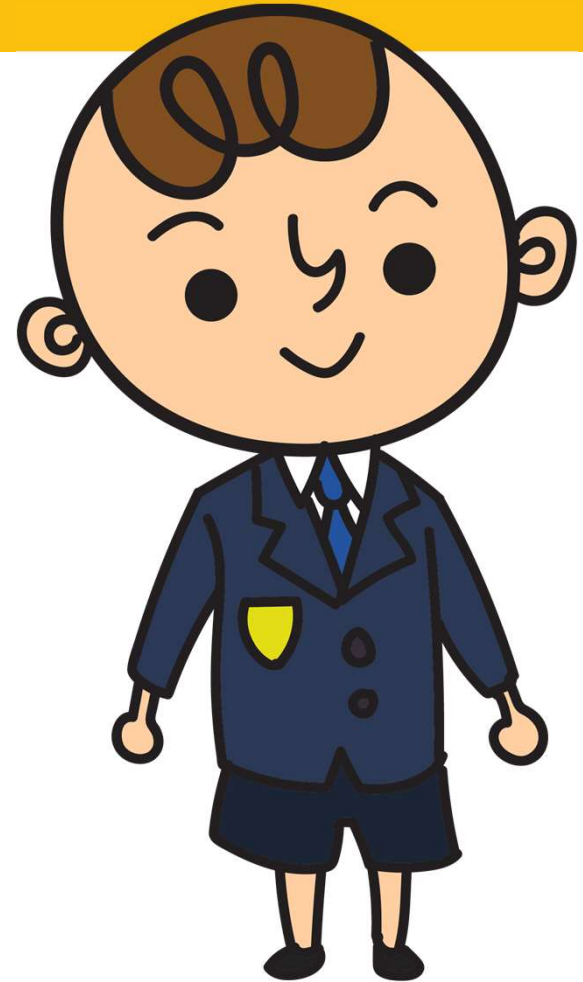
SUCCESS CRITERIA:

- Why is uniform important?
- What does our school uniform consist of?
- What do we do if we are out of uniform?

PBL Focus

SUCCESS CRITERIA:

- Why is a uniform important?
- What does the school uniform consist of?
- What do we do if we are out of uniform?

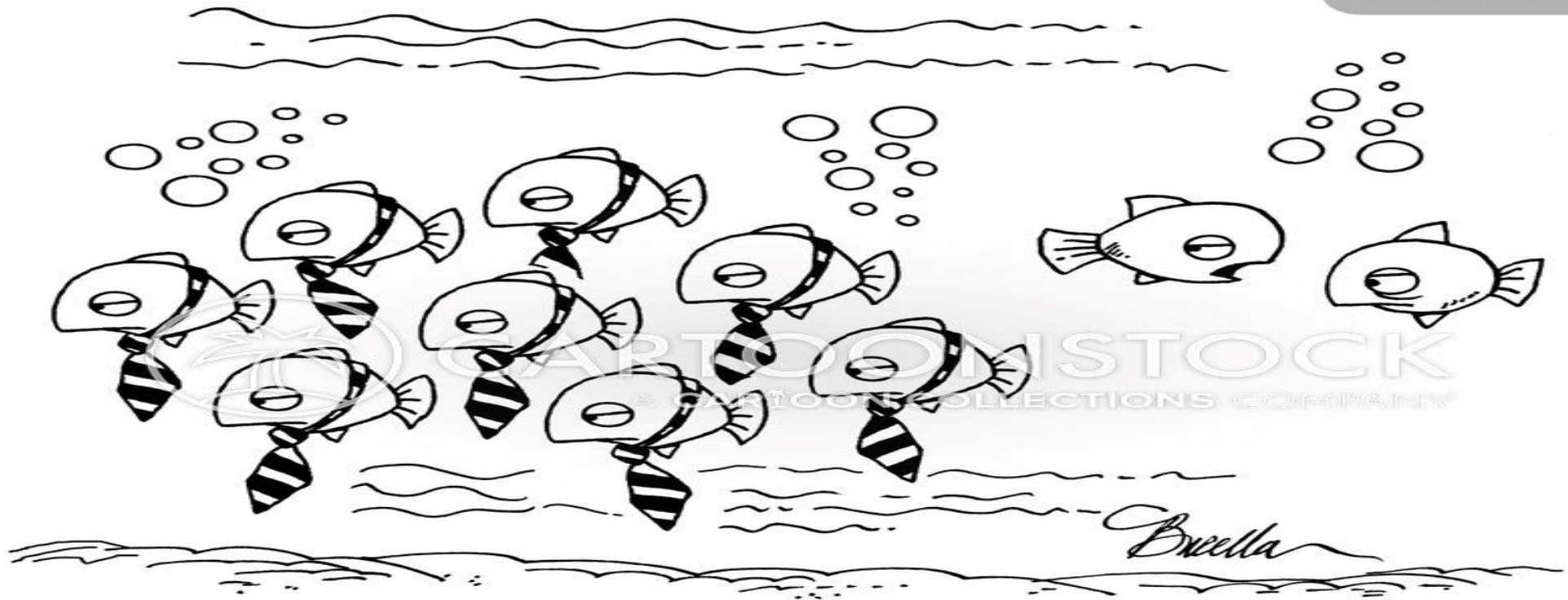


Why is Uniform Important?

- It prepares you for life outside of school and the occupations that require uniforms for safety reasons, identification, and professional reasons
- Significantly reduces distraction from class work, reduces competition and bullying that naturally occurs when young people dress fashionably
- Having all students in uniform means we can easily identify our students from those who should not be in the school grounds

Group Identity

CS443297



"Private school. You can tell by the ties."

Our ESHS Uniform?

Our uniform is selected by your Parents and the P & C committee.

It is designed to be:

- Comfortable
- Professional
- Safe
- Practical
- Affordable
- Suit most body shapes
- Suit our CQ climate
- Easy to wash and care for



Our ESHS Uniform?

Our uniform is selected by your Parents and the P & C committee.

It is designed to be:

- Comfortable
- Professional
- Safe
- Practical
- Affordable
- Suit most body shapes
- Suit our CQ climate
- Easy to wash and care for



Our ESHS Uniform?

The uniform requirements are as follows:

ALL YEAR

- ➡ Closed in shoes with laces
- ➡ ESHS shorts OR PLAIN black mid-length shorts with NO logos or symbols
- ➡ ESHS polo shirt



Our Formal Uniform?

FORMAL UNIFORM

Boys

- ➡ White button-up shirt
- ➡ Black dress trousers
- ➡ ESHS tie
- ➡ Black socks
- ➡ Black leather shoes



Girls

- ➡ White ESHS blouse
- ➡ Bottle green knife pleated skirt or tartan skirt

OR

- ➡ Black dress trousers
- ➡ White ankle socks
- ➡ Black leather shoes



Our Winter Uniform?

WINTER

- ➡ ESHS tracksuit pants OR PLAIN black tracksuit pants with NO logos or symbols
- ➡ ESHS jumpers OR PLAIN black jumper that does not have a hood or logo/symbol of any kind
- ➡ NO beanies and headwear



Yes



No



Appropriate Footwear

- Correct Footwear

Sports Shoes – based on WHS

Yes:



No:



Formal Shoes – based on WHS

Yes:



No:



Appropriate Footwear

• Correct Footwear

Sports Shoes –

Yes:



Formal Shoes –

Yes:



If a student has the wrong footwear on, eg. Thongs:

- Parent contacted to bring in correct shoes
- If the parent is unavailable, the student will work at the office or in Support Works
- Not able to complete practical lessons for the day.
- With or without a note. Your safety is too important.

PBL Focus

Those involved in other subjects that need a different uniform- you are provided time during class to change.

You are not allowed to wear this at any other time.



Items **NOT** to be worn:

Items not to be worn:

- Open footwear or shoes without laces*
- Beanie or similar headwear
- Any clothing with logos or prints
- Tights
- Denim
- Hooded jackets
- Excessive makeup
- Excessive jewelry (1 bracelet, 1 pair of stud earrings, 1 watch, 1 neck chain)
- Facial piercings



It could be a whole lot worse!



What do we do if we are out of Uniform?

Straight from your student diary on page 4:

You are OUT OF SCHOOL UNIFORM

1. PC teacher will record on ID attend and send student to uniform room J12 during PC or first break
2. Student hands in non-school approved item and is given a clean uniform item to borrow for the day.
3. If a suitable item is not available to the student, a slip will be issued
4. HOY (Head of Year) records that the student followed instruction

What do we do if we are out of Uniform?

Straight from your student diary on page 4:

You are OUT OF SCHOOL UNIFORM AND DO NOT FOLLOW INSTRUCTION

1. PC teacher will record on ID attend and send student to uniform room J12 during PC or first break
2. Teacher records in One School that student refused to follow instruction (Defiant)
3. 1st offence HOY (Head of Year) follow up & warning issued
4. 2nd offence: Uniform reflection with HOY & phone call/email home
5. 3rd offence: Uniform monitoring booklet

Process for Non-Compliance

- Students who are unable to wear the uniform as stipulated above **must have a note** from a parent. This includes shoes (even if you have a medical reason).
- Students who are out of uniform are **required to change** into a school uniform supplied by the uniform room and return these at the end of the school day.
- YOU WILL BE SENT **DURING PC TIME OR WHEN YOU ARRIVE AT SCHOOL** (if late). Students are to change regardless of whether or not they have parental permission or provided a note by a HOY or DP.
- Students who **do not have a note** will be sent to a **Deputy Principal** where parental contact will be made and a detention issued for non- compliance.
- Continued breaches of the schools uniform code will result in a suspension.

End of Term Positive Rewards



TERM 2 REWARD:

Tuckshop Treat:

- Hot Drink
- Slushie
- Baked Goodie
- Ice-block



[This Photo](#) by Unknown Author is licensed under [CC BY-NC](#)

End of Term Positive Rewards



CRITERIA:

No negative
behaviour entries for
all of term 2.



[This Photo](#) by Unknown Author is licensed under [CC BY-NC-ND](#)

Have a fabulous week.

